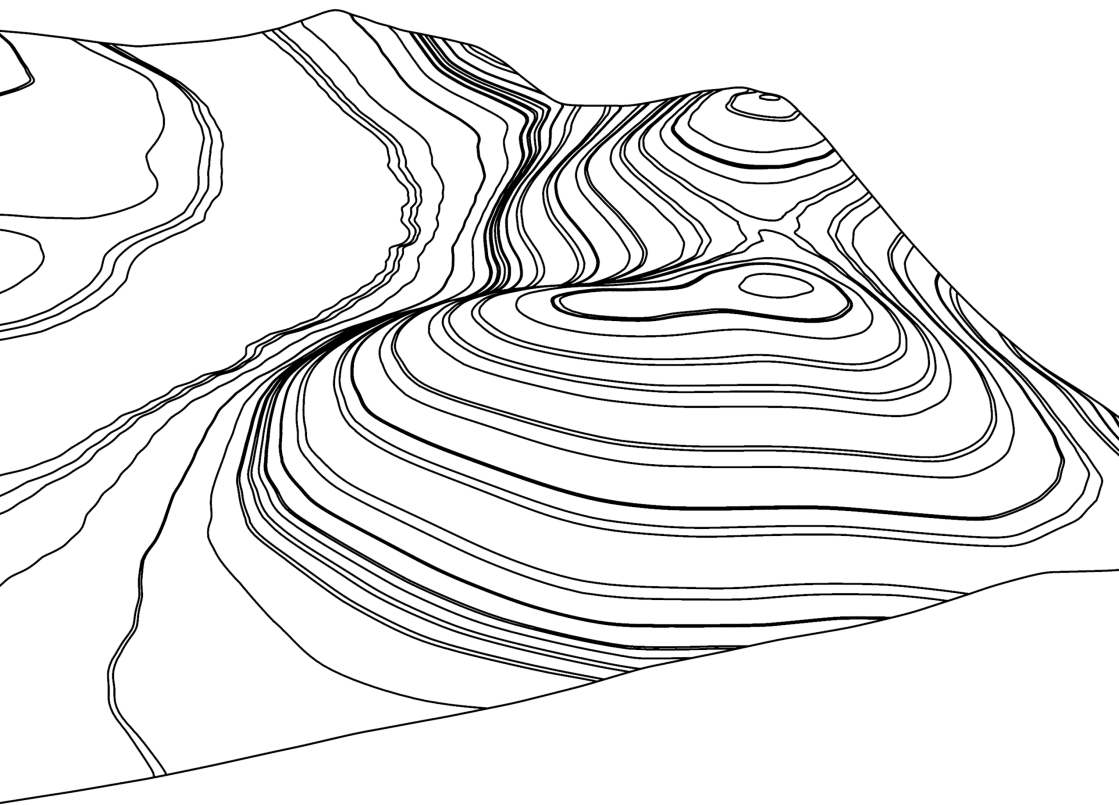


TASTING
THE NEW DOURO

NOV 6TH
2017



**THE
NEW
DOURO**

Taste along the River

01	SOGRAPE VINHOS (CASA FERREIRINHA & SANDEMAN)	04
02	DUAS QUINTAS (RAMOS PINTO)	06
03	DUORUM	08
04	QUINTA NOVA	10
05	LAVRADORES DE FEITORIA	12
06	POEIRA	14
07	NIEPOORT	16
08	NOVA QUINTA DO SAGRADO	18
09	QUINTA DA BOAVISTA & TECEDERAS	20
10	QUINTA DA GAIVOSA (ALVES DE SOUSA)	22
11	QUINTA DE SÃO JOSÉ	24
12	QUINTA DO CRASTO	26

13	QUINTA DO PASSADOURO	28
14	QUINTA DO PESSEGUEIRO	30
15	QUINTA DO VALLADO	32
16	QUINTA DOS MURÇAS	34
17	QUINTA VALE D. MARIA	36
18	QUINTA DO VALE MEÃO	38
19	REAL COMPANHIA VELHA	40
20	KOPKE - EST. 1638	42
21	SYMINGTON FAMILY ESTATES	44
22	PRATS & SYMINGTON (CHRYSEIA)	46
23	VERTICE	48
24	WINE & SOUL	50

01

SOGRAPE VINHOS (CASA FERREIRINHA & SANDEMAN)

Sogrape Vinhos is Portugal's leading family-owned fine wine company, placing a strong focus on exports and international markets. The company philosophy is based on the production of high-quality wines, on innovation and the development of Portuguese brands; this has always been consistently articulated by means of their family values and ethical considerations. Sogrape Vinhos is the proud owner of more than 750 hectares of vineyards in Portugal. Part of a group with a presence in five different countries – Portugal, Spain, New Zealand, Argentina and Chile – the Sogrape Vinhos concern was recently voted the Best Wine Producer in the World – a distinction awarded in 2015 and 2016 by the World Association of Writers and Journalists of Wines and Spirits.

WINES BEING PRESENTED BY

LUÍS SOTTOMAYOR

JOANA PAIS

GONÇALO SOUSA MACHADO

CHRIS APPLEBY

RACHAEL DEAL

CONTACT

info@sograpevinhos.com
www.sograpevinhos.com

CONTACT UK

customerservices@libertywines.co.uk
www.libertywines.co.uk

CASA FERREIRINHA PAPA FIGOS WHITE 2016

CASA FERREIRINHA VINHA GRANDE WHITE 2016

CASA FERREIRINHA ESTEVA RED 2016

CASA FERREIRINHA PAPA FIGOS RED 2016

CASA FERREIRINHA CALLABRIGA RED 2015

CASA FERREIRINHA QUINTA DA LEDA RED 2015

SANDEMAN PORTO VINTAGE QUINTA DO SEIXO 2013

SANDEMAN PORTO VINTAGE QUINTA DO SEIXO 2015

02

DUAS QUINTAS (RAMOS PINTO)

Ramos Pinto was founded in 1880 and, for several decades, its history has been marked by a balance between innovation and respect for tradition. The House is known for producing and selecting the best grapes, its knowledge of terroir and for pioneering the launch of New Douro wines all over the world. Today, Ramos Pinto retains its position as a traditional House producing top quality wines. In the quest for excellence, Ramos Pinto is independently run to this day, which enables the House to conduct continuous technical and technological research. The House owns four estates in the Douro: Quinta do Bom Retiro and Quinta da Urtiga, in the heart of the region, as well as Quinta dos Bons Ares and Quinta de Ervamoira in the Douro Superior. Committed to improving its bond with nature and the environment, Ramos Pinto is working towards this achievement by implementing organic farming and increasing biodiversity in the vineyard. This is a legacy which the House is proud to leave to future generations. Welcome to the Ramos Pinto Wine World!

Wines being presented by

TERESA AMEZTOY

CONTACT

arato@ramospinto.pt
tameztoy@ramospinto.pt
www.ramospinto.pt

CONTACT UK

Christine.Allen@mmdltd.co.uk
www.mmdltd.co.uk

DUAS QUINTAS CLASSIC WHITE 2016

DUAS QUINTAS RESERVA WHITE 2016

DUAS QUINTAS CLASSIC RED 2015

DUAS QUINTAS RESERVA RED 2015

PORTO VINTAGE 2015

PORTO VINTAGE 1997

03

DUORUM

Duorum Vinhos is an innovative project in the Douro set up by two highly respected Portuguese wine producers, João Portugal Ramos and José Maria Soares Franco. The project was established in 2007 with the aim of producing the highest quality wines based on a sustainable rural development policy, promoting good viticulture practices and respecting the region's ecological and landscape values. They use grapes from vineyards located on slopes at different altitudes (150–500m), from some of the best terroir in the region and carefully selected varieties of indigenous vines. Red wine varieties are Touriga Nacional, Touriga Franca, Souzão, Tinta Francisca & Tinto Cão. For white wine, the varieties are Viosinho, Rabigato, Verdelho and Arinto. Properties include parcels in Quinta de Castelo Melhor and two old rented vineyards, both in Castelo Melhor near V. N. Foz Côa.

Wines being presented by

JOÃO PERRY VIDAL

CONTACT

jperryvidal@jportugalramos.pt
www.duorum.pt

CONTACT UK

general@oakleywineagencies.co.uk
www.oakleywineagencies.co.uk

TONS DE DUORUM WHITE 2016

DUORUM COLHEITA WHITE 2015

TONS DE DUORUM RED 2015

DUORUM COLHEITA RED 2015

DUORUM RESERVA OLD VINES 2015

DUORUM O. LEUCURA 2012

DUORUM LBV 2012

DUORUM VINTAGE PORT 2015

04

QUINTA NOVA

Quinta Nova de Nossa Senhora do Carmo is situated in a unique and distinctive location in the Douro Valley (Cima Corgo), owned by the Amorim family and managed with passion by Luisa Amorim. Extending for 1.5km along the north bank of the river, the 120-hectare property has 85ha of carefully maintained letter-A vines, all indigenous grape varieties. At the modernized winery, first established in 1764, they strive to achieve the best from every batch, with rigorous standards and continually innovative winemaking techniques. Represented in 31 markets, Quinta Nova offers a premium range of Douro and Port wines, recognized for several international awards. In 2005 Quinta Nova opened the first wine hotel in Portugal and today, with the Conceitus Winery Restaurant and a Wine Museum Centre, represents a great experience of the Douro Valley.

Wines being presented by

PEDRO CANEDO

CONTACT

quintanova@amorim.com
www.quintanova.com

CONTACT UK

www.oakleywineagencies.co.uk
general@oakleywineagencies.co.uk

POMARES WHITE 2016

POMARES RED 2015

GRAINHA RESERVA WHITE 2016

QUINTA NOVA UNOAKED RED 2015

QUINTA NOVA TERROIR BLEND RESERVA RED 2015

QUINTA NOVA LBV PORT 2013

05

LAVRADORES DE FEITORIA

Lavradores de Feitoria unites 15 producers and 19 Quintas spread out among the best terroirs in the 3 sub-regions of the Douro (Baixo Corgo, Cima Corgo and Douro Superior). These producers – also shareholders in the company, as one team, under one brand – join together to share resources and create synergies to accomplish together what they could not accomplish alone: produce ‘feitoria wines’, the best wines produced in the Douro River Valley.

Wines being presented by

OLGA MARTINS

CONTACT

lavradores@lavradoresdefeitoria.pt
www.lavradoresdefeitoria.pt

CONTACT UK

info@raymondreynolds.co.uk
www.raymondreynolds.co.uk

LAVRADORES DE FEITORIA BRANCO 2016

LAVRADORES DE FEITORIA TINTO 2015

TRÊS BAGOS BRANCO 2016

TRÊS BAGOS SAUVIGNON BLANC 2016

TRÊS BAGOS TINTO RESERVA 2015

MERUGE BRANCO 2016

MERUGE TINTO 2015

06

POEIRA

The quinta is situated in Provesende, stretching along a hillside in the Vale do Pinhão, on the right bank of the eponymous river. It consists of nine hectares of vineyard, two hectares of olive groves and three hectares of woodland. The vineyard has a northerly exposure, which constitutes a fundamental factor in determining the estate's style of table wine. Temperatures in the region are always extremely high in summer, and on a north-facing slope the grapes can ripen more gradually, which preserves the aromas, flavours and acidity better. The dilapidated building beside the old orange tree has been restored and now serves as both house and winery, set in a breathtaking, intense landscape amidst the vines. The winery is minimalist, with four traditional stone lagares (temperature controlled) and an old vertical press. It also has a climate-controlled cask-ageing cellar with thick schist walls. It is a winery designed for developing wines very slowly and with great care, equipped with everything necessary to be able to achieve the full expression of its terroir.

Wines being presented by

OLGA MARTINS

CONTACT

poeira@poeira.pt
www.poeira.pt

CONTACT UK

damian.carrington@fmvwines.com
www.fmvwines.com

PO DE POEIRA WHITE 2016

POEIRA WHITE 2015

PO DE POEIRA RED 2016

POEIRA RED 2015

07

NIEPOORT

Niepoort has operated as an independent family business since 1842. Through five generations the company has passed successfully from one generation to the next; most often, older and younger generations have worked side by side for extended periods. Their Port cellars are a magical place in the heart of historic Vila Nova de Gaia, where the wines carefully mature in old casks, bottles or demijohns. More than 150 years of experience and dedication pass here across generations. Quinta de Nápoles, located on the left bank of the River Tedo, was purchased in 1987, a first step in the creation of Niepoort's inspired range of unfortified wines. The quinta includes nearly 30 hectares of vineyards at an altitude of 140–260 metres, ranging from 25 to over 80 years old. Reds, whites and rosés are produced in the beautiful and modern winery built in 2007. The motto of the company articulates its respect for different terroirs and a curiosity in the search for new wines.

Wines being presented by

NICK DELAFORCE

CONTACT

info@niepoort.pt
www.niepoort.pt

CONTACT UK

rr@raymondreynolds.co.uk
www.raymondreynolds.co.uk

www.raeburnfinewines.com
sales@raeburnfinewines.com

REDOMA BRANCO 2016

REDOMA RESERVA BRANCO 2016

VERTENTE 2015

REDOMA TINTO 2015

BATUTA 2015

CHARME 2015

LBV 2013

COLHEITA 1997

08

NOVA QUINTA DO SAGRADO

Nova Quinta do Sagrado, is one of the oldest properties in Pinhão and gathers two centenary families - the descendants of the iconic Marquis Nicolas Alexandre de Ségur, proclaimed as Prince des Vignes by King Louis XV of France, and the Cálem family, one of the most emblematic producers and shippers of Port wine. The estate is equipped with traditional granite tanks for foot treading, temperature control for fermentation, and French oak cooperage for aging the wines. After bottling, their wines are kept for a minimum of 12 months further maturing before being released.

Wines being presented by

FILIPE PEREIRA

CONTACT

filipepereira@quintadosagrado.pt
www.quintadosagrado.pt

CONTACT UK

sales@martavine.co.uk
www.martavine.co.uk

SAGRADO RED 2015

SAGRADO WHITE 2016

SAGRADO ROSE 2016

SAGRADO RESERVA RED 2012

SAGRADO VT GRANDE RESERVA 2009

SAGRADO VINHAS VELHAS (OLD VINES) 2010

QUINTA DO SAGRADO FINE RUBY

QUINTA DO SAGRADO LBV 2010

09

QUINTA DA BOAVISTA & TECEDERAS

Since 2011, Lima Smith Lda – a partnership between Brazilian entrepreneur Marcelo Lima and former British foreign correspondent Tony Smith – has been investing in the wine regions of northern Portugal and currently features three prestigious Portuguese quintas in its portfolio: Quinta de Covela, producer of top-quality whites and rosés, and two emblematic DOC Douro estates producing red wine and Port – the historically important Quinta da Boavista and Quinta das Tecedeiras, on the left bank of the Douro River. Within a short period, Lima Smith has relaunched both Covela and Tecedeiras in Portugal and in several international markets, winning the prestigious 'Viticulture and Newcomer of the Year awards' in Portugal along the way. The partnership's first wines from the Quinta da Boavista, produced in collaboration with long-time Château Pétrus wine director Jean-Claude Berrouet, have sold out quickly for two vintages running since launching in 2016.

Wines being presented by

TONY SMITH
HARRY CROWTHER (BRAND AMBASSADOR)

CONTACT

tony@limasmith.com
www.limasmith.com

CONTACT UK

www.grapetimes.co.uk
harry@grapetimes.co.uk

Portal Wines & Spirits Ltd
antonio@portalwinesandspirits.com
ian@portalwinesandspirits.com

Quinta das Tecedeiras
www.clarkfoysterwines.co.uk
sales@cfwines.co.uk

BOA-VISTA RESERVA 2014

QUINTA DA BOAVISTA - VINHA DO ORATÓRIO 2014

QUINTA DA BOAVISTA - VINHA DO UJO 2014

QUINTA DAS TECEDERAS RESERVA 2015

QUINTA DAS TECEDERAS TAWNY RESERVE

QUINTA DAS TECEDERAS VINTAGE PORT 2014

QUINTA DAS TECEDERAS COLHEITA 2008

10

QUINTA DA GAIVOSA (ALVES DE SOUSA)

The Alves de Sousa family has been making wine in the Douro Valley for five generations. The old and ever-present wish to find the very best expression of a Douro vineyard lead Alves de Sousa to work only with indigenous grape varieties from the family's holdings. The quality and distinctive nature of their wines have been widely recognised, with accolades and mentions in highly regarded domestic and international publications. One very special highlight was the 'Producer of the Year' award, presented in 1999 and again in 2006 by the most influential Portuguese wine magazine (Revista de Vinhos), with which Quinta da Gaivosa became the first estate to receive the most coveted and prestigious distinction for Portuguese wine producers more than once.

Wines being presented by

DOMINGOS ALVES DE SOUSA
LUCILIA ALVES DE SOUSA

CONTACT

www.alvesdesousa.com
info@alvesdesousa.com

CONTACT UK

www.topselection.co.uk
info@topselection.co.uk

www.atlantico.co.uk
geral@atlantico.co.uk

VALE DA RAPOSA RESERVA WHITE 2016

BERÇO WHITE 2012

VALE DA RAPOSA GRANDE ESCOLHA RED 2015

QUINTA DA GAIVOSA RED 2013

QUINTA DA GAIVOSA VINHA DE LORDELO RED 2013

ABANDONADO RED 2013

QUINTA DA GAIVOSA PORTO VINTAGE 2015

ALVES DE SOUSA PORTO VINTAGE 2015

QUINTA DE SÃO JOSÉ

The wine expresses itself directly in the heritage of matriarch Dona Antónia Ferreira, while João Brito e Cunha is an example of the new generation of winemakers and producers that have settled in the Douro, launching personal projects. Quinta de São José is a family project that was launched in early 1999 by João's father, Ruy Brito e Cunha, inspired by the excellent location of the buildings in the Quinta, practically on the bank of the river. The structures were restored, respecting the framing and materials typical to the Douro region. The estate has 10 hectares of vineyards. Many events, dinners and wine lunches are organised at Quinta de S. José, as well as vineyard visits with the producer and winemaker. A wine shop for sale to the public has been added to the estate. Access to the Quinta is made easy by the existence of a private pier in front of Quinta de S. José, affording visitors with the opportunity for a memorable visit.

Wines being presented by

JOÃO BRITO E CUNHA

CONTACT

www.quintasjose.com
joabritoecunha@quintasjose.com
carlaclemente@quintasjose.com

CONTACT UK

*Looking for an
importer in the UK*

FLOR DE S. JOSÉ WHITE 2016

FLOR DE S. JOSÉ RESERVA WHITE 2016

QUINTA DE S. JOSÉ RED 2015

QUINTA DE S. JOSÉ RESERVA RED 2015

QUINTA DE S. JOSÉ GRANDE RESERVA RED 2015

QUINTA DE S. JOSÉ TOURIGA NACIONAL 2015

12

QUINTA DO CRASTO

Dating back to 1615, Quinta do Crasto is one of the most spectacularly-situated properties in the Douro, and among the first to break out on its own. Owned and run by the Roquette family, Crasto has quickly established a worldwide reputation for the quality of both its Port and its red wines. Marrying tradition with the state-of-the art technologies, Quinta do Crasto still uses the food-treading method in old granite lagares. Located in the heart of the Cima Corgo, midway between Régua and Pinhão, Quinta do Crasto is officially classified as a grade-A property. The estate covers 135 hectares of predominantly south-facing slopes extending from the banks of the river up to an altitude of nearly 600 metres. Consistent with the Roquette family's ongoing commitment to quality and to the future, they have recently acquired Quinta da Cabreira in the Upper Douro – 150 hectares, 114 of which planted with new vines, an important complement to Quinta do Crasto's wine production.

Wines being presented by

RITA CAMELO
MANUEL LOBO

CONTACT

rita.camelo@quintadocrasto.pt
www.quintadocrasto.pt

CONTACT UK

e.pierato@enotria.coe.com
www.enotriacoe.com

CRASTO DOURO WHITE 2016

CRASTO SUPERIOR WHITE 2016

CRASTO DOURO RED 2015

CRASTO SUPERIOR RED 2015

CRASTO SUPERIOR SYRAH 2015

QUINTA DO CRASTO RESERVA OLD VINES 2015

QUINTA DO CRASTO TOURIGA NACIONAL 2015

QUINTA DO CRASTO VINTAGE PORT 2015

13

QUINTA DO PASSADOURO

Quinta do Passadouro is located in the Douro Valley, on the left bank of the Pinhão River, 8km from the village. The owners of this estate are the Bohrmann family, of German and Belgian origins, The family is also involved on the wine production in Burgundy. The estate is divided into two different properties, the Quinta do Passadouro with 20ha of vines plus 5ha of olive trees, and the Quinta do Sibio with 20 hectares of vines. All 40 hectares of vines are grafted with indigenous varieties from the Douro such as Touriga Nacional, Touriga Franca, Tinta Roriz, Sousão and Tinta Barroca. In recent years, large investments have been made to modernize the vineyards and to install modern equipment in order to produce high quality table wines, while the port wines are still 100% foot trodden in traditional granite lagares. For the reds, a mix of lagare and stainless steel tank is used to vinify the grapes, the goal being to respect terroir and present the Douro's unique character.

Wines being presented by

ANS BOHRMANN
SOFIE BOHRMANN

CONTACT

info@quintadopassadouro.com
www.quintadopassadouro.com

CONTACT UK

www.fmvwines.com
FMVmarketing@fmv.co.uk

PASSADOURO BRANCO 2016

PASSADOURO TINTO 2015

TOURIGA FRANCA 2015

PASSADOURO RESERVA 2015

PASSADOURO LBV 2012

14

QUINTA DO PESSEGUEIRO

Quinta do Pessegueiro is situated in the purest landscape of the Upper Douro, in Ervedosa do Douro, São João da Pesqueira. Known for its distinctive and unique features, Pessegueiro has expanded over time and now comprises three parcels, all situated in the Douro region. Situated in the very heart of the estate, their cellar is distinguished by its architecture derived from the functions of winemaking and the particular methods employed. The building rises to five levels and combines traditional methods for making high quality wines with the most sophisticated equipment. A real technological challenge, the cellar was designed to use the force of gravity throughout the entire process. The family is very important to French owner Roger Zannier; he has entrusted the management of the estate to his son-in-law, Burgundian native Marc Monrose.

Wines being presented by

JOÃO NICOLAO DE ALMEIDA

CONTACT

antoniobeza@zannier.com
www.quintadopessegueiro.com

CONTACT UK

*Looking for an
importer in the UK*

QUINTA DO PESSEGUEIRO RED 2015

CÃO DANADO - TINTO CÃO - 2015

BARRRO VERMELHO - TOURIGA NACIONAL - 2015

ALUZÉ RED 2013

ALUZÉ WHITE 2016

WHITE PORT QUINTA DO PESSEGUEIRO

VINTAGE QUINTA DO PESSEGUEIRO 2014

15

QUINTA DO VALLADO

Established in 1716, Quinta do Vallado is one of the oldest, most famous estates in the Douro Valley. Once the property of the legendary Dona Antónia Adelaide Ferreira, it still belongs to her descendants. In the heart of the region, Quinta do Vallado spreads along both banks of the Corgo River, a tributary of the Douro. For almost 200 years, Quinta do Vallado produced mainly Port, shipped by Ferreira. Since the early 1990s, Vallado has sold still wine and Port under its own brand. They now hold over 70 hectares of vineyards near Peso da Régua, plus 30ha more recently planted at Quinta do Orgal, in Vila Nova de Foz Côa. The three cousins responsible for the estate, João Ferreira Álvares Ribeiro, Francisco Ferreira and Francisco Olazabal, have led the way in elevating Quinta do Vallado to prestigious international recognition. Vallado's wine hotels – at Régua and in the Upper Douro in Vila Nova de Foz Côa – are critically acclaimed as among the region's most successful.

Wines being presented by

FRANCISCO FERREIRA

CONTACT

geral@quintadovallado.com
www.quintadovallado.com

CONTACT UK

sales@bibendum-wine.co.uk
www.bibendum-wine.co.uk

VALLADO WHITE 2016

VALLADO PRIMA 2016

VALLADO RED 2015

VALLADO DOURO SUPERIOR ORGANIC VINEYARDS - 2015

QUINTA DO VALLADO TOURIGA NACIONAL 2015

QUINTA DO VALLADO RESERVA FIELD BLEND 2015

QUINTA DO VALLADO RESERVA TAWNY

QUINTA DO VALLADO TAWNY 10 YEARS OLD

16

QUINTA DOS MURÇAS

The wine producer Esporão was born in the Alentejo out of an uncompromising desire to produce the finest wines, which remains the motivation behind all that they do. Everywhere, nature inspires them. Thus they respect the rhythms of the land, seek to understand the roots of the culture and the communities they belong to, and protect their common heritage. Esporão has always pursued a global vision that articulately expresses their essential nature – one of the reasons why they established a wine estate in the Douro region, at Quinta dos Murças. Located in the centre of the Douro DOC region, Quinta dos Murças benefits from a terroir heavily influenced by the mountains, altitude, schist soils and a climate that is typical of the river Douro valley. In the vineyards, dozens of native grapes have been planted, following organic and integrated production methods. Olive, orange and almond groves – as well as the Mediterranean forest – help to maintain a balanced ecosystem.

Wines being presented by

NUNO CABRAL

CONTACT

nuno.cabral@esporao.com
www.esporao.com

CONTACT UK

www.matthewclark.co.uk
JudithNicholson@matthewclark.co.uk

ASSOBIO WHITE 2016 | ASSOBIO RED 2016

QUINTA DOS MURÇAS MINAS RED 2016

QUINTA DOS MURÇAS MARGEM RED 2016

QUINTA DOS MURÇAS RESERVA RED 2012

QUINTA DOS MURÇAS VV47 RED 2013

QUINTA DOS MURÇAS TAWNY 10Y

QUINTA DOS MURÇAS VINTAGE 2015

17

QUINTA VALE D. MARIA

Located in the heart of the Douro Demarcated Region in the Rio Torto valley, Quinta Vale D. Maria was acquired by Cristiano and wife Joana van Zeller in 1996 from Joana's family. This very old quinta, which had been in Joana's family for well over 250 years, was then reduced to a 19-hectare property, planted with 10 hectares of vineyards over 50 years old. With 41 varieties planted on slopes facing South, South East, South West, East and West, Cristiano found the ideal base for a very unique wine and produced his first Quinta Vale D. Maria Douro Red. Many wines have followed, by identifying the character of each single vineyard, namely CV-Curriculum Vitae Douro Red, Vinha do Rio and Vinha da Francisca. All our wines from our own vineyards are foot trodden in open traditional lagares, where they ferment, and then racked into french oak barrels for aging by a dedicated team of viticulturists and winemakers – Joana Pinhão and Cristiano van Zeller.

Wines being presented by

CRISTIANO VAN ZELLER

CONTACT

Cristiano.vanzeller@
quintavaledonamaria.com
Francisca.vanzeller@
quintavaledonamaria.com
www.quintavaledonamaria.com

CONTACT UK

www.corney-barrow.co.uk
alison.buchanan@corneyandbarrow.com

www.tanners-wines.co.uk
sales@tanners-wines.co.uk

www.thewinesociety.com
LockeJ@thewinesociety.com

VALE D. MARIA 2016 VVV VALLEYS DOURO WHITE

VALE D. MARIA 2015 VVV VALLEYS DOURO RED

QUINTA VALE D. MARIA 2015 DOURO RED

QUINTA VALE D. MARIA 2015 VINHA DA FRANCISCA DOURO RED

QUINTA VALE D. MARIA 2015 VINHA DO RIO DOURO RED

CV – CURRICULUM VITAE 2015 DOURO RED

QUINTA VALE D. MARIA 2015 VINTAGE PORT

18

QUINTA DO VALE MEÃO

This important Douro estate, planted by Dona Antónia Adelaide Ferreira on 270 hectares of barren common land purchased in 1877, was the last great achievement of the legendary Lady of the Douro. It is now owned by her great-great grandson Francisco Javier de Olazabal, currently chairman of the company, with executive functions being carried out by his oenologist son Francisco Olazabal. The vines cover 84 hectares of the property and are planted in soils of diverse geologic nature: schist, granite and alluvial gravel. This variety, unusual in the Douro, contributes to the complexity of the wines. The vineyards are block-planted with the following varieties: Touriga Nacional (40%), Tinta Roriz (25%), Touriga Francesa (20%), Tinta Amarela (5%), Tinta Barroca (5%) and Tinto Cão (2%) Sousão (2%) and others (1%).

Wines being presented by

FRANCISCO OLAZABAL

CONTACT

l.o@quintadovalemeao.pt
www.quintadovalemeao.pt

CONTACT UK

info@raymondreynolds.co.uk
www.winesfromportugal.com

QUINTA DO VALE MEÃO 2015

MEANDRO 2015

MONTE MEÃO TOURIGA NACIONAL 2014

MONTE MEÃO TINTA RORIZ 2014

QUINTA DO VALE MEÃO 2015 VINTAGE PORT

MEANDRO VINTAGE PORT

19

REAL COMPANHIA VELHA

Real Companhia Velha is a well-established company, founded in 1756 by Royal Charter of D. José, King of Portugal. Over its 260 years of uninterrupted activity, Real Companhia Velha has developed a worldwide reputation for its distinguished wines. Considered today as the leading Douro producer, the company owns some of the finest quintas in the valley, representing over 535 hectares of premium vineyards. Their internationally praised Douro wines cover a wide range of price points and represent the ultimate generation of modern Portuguese wine making.

Wines being presented by

JOSÉ SILVA

CONTACT

www.realcompanhiavelha.pt
josesilva@realcompanhiavelha.pt

CONTACT UK

paul.shinnie@alliancewine.com
www.alliancewine.com

DELAFORCE ALVARINHO 2016

DELAFORCE TOURIGA NACIONAL 2014

DELAFORCE LATE BOTTLED VINTAGE 2011

QUINTA DO SÍBIO ANANICO 2015

PORCA DE MURÇA RED 2015

CARVALHAS WHITE 2015

CARVALHAS TINTA FRANCISCA 2013

CARVALHAS VINHAS VELHAS RED 2015

20

KOPKE - EST. 1638 (SOGEVINUS FINE WINES)

Sogevinus owns an exclusive, highly individual portfolio of Port houses, with centuries of history between them: Kopke, Burmester, Cálem and Barros. Leaders in Port wine sales in Portugal, and worldwide leaders in Colheitas, the noblest category of Tawny – oak- aged single-harvest Ports, bottled just prior to release, ready to drink. Colheitas, celebrated around the world, epitomise the Portuguese culture of great Port and offer an amazingly diverse and pleasurable experience to Port lovers. Sogevinus is also increasingly recognised for the quality of its DOC Douro wines, an area it has invested in since 2006. Their DOC Douro wines – made with the same care as the Ports – are gaining international recognition with critics and press the world over. Sogevinus is committed to winelovers, and believes that getting to know the beauty and character of the region where they are produced – the Douro River Valley – is essential to appreciating these unique and noble wines.

Wines being presented by

RICARDO MACEDO
JOÃO BELO

CONTACT

joao.belo@sogevinus.com
www.sogevinus.com”

CONTACT UK

wine@haywardbros.co.uk
www.haywardbros.co.uk

KOPKE 30 YO WHITE

KOPKE 10 YO WHITE

KOPKE COLHEITA 1981

KOPKE COLHEITA 1967

CASA BURMESTER 2015 TOURIGA NACIONAL

KOPKE RESERVA TINTO 2015

KOPKE RESERVA BRANCO 2016

21

SYMINGTON FAMILY ESTATES

The Symingtons – of Scottish, English and Portuguese descent – have been Port producers for five generations, since 1882. However, their family's involvement in the Douro dates back fourteen generations through their great-grandmother Beatrice Leitão de Carvalhosa Atkinson, whose ancestors were among Port's pioneers in 1652. Six members of the family: Paul, Johnny, Rupert, Dominic, Charles and Robert work together in the Douro and Vila Nova de Gaia. In the 1990's the Symingtons began to produce Douro DOC wines from some of their best vineyards, making use of the outstanding number of different properties, 27 Quintas, located across most of the region's most interesting Terroirs. Symington's direct involvement in farming its own most premium grapes, with over 1,000 hectares of Vineyards holding, is of fundamental importance for the quality of its Ports and DOCs. The family are part of a new generation of winemakers producing exciting new wines from the low-yielding grape varieties and unique schistous soils of the Douro.

Wines being presented by

JOÃO VASCONCELOS
ALEX DOWN

CONTACT

jmv@symington.com
www.symington.com

CONTACT UK

info@fells.co.uk
www.fells.co.uk

ALTANO WHITE 2016

ALTANO ORGANIC 2016 RED

QUINTA DO ATAÍDE 2014 RED

QUINTA DO ATAÍDE VINHA DO ARCO 2014 RED

POMBAL DO VESÚVIO 2016 RED

QUINTA DO VESUVIO 2015 RED

COCKBURN'S VINTAGE PORT 2015

22

CHRYSEIA (PRATS & SYMINGTON)

Founded in 1999 as a joint venture between veteran Bordeaux winemaker Bruno Prats and the Symington family, Chryseia is an independent company specialising in dry red wines that has been at the forefront of the Douro DOC quality revolution, instrumental in driving the image of the region forward. Since acquiring Roriz in the spring of 2009, Prats & Symington has moved the vinification of CHRYSEIA and POST SCRIPTUM to join PRAZO DE RORIZ in the modern, dedicated facility on the property. Both quintas are located near the town of Sao João da Pesqueira, Roriz in a natural amphitheatre on the banks of the Douro, while Perdiz lies on a steep gradient on the other side of the same mountain in the Rio Torto Valley, which runs northwest into the main Douro Valley near Pinhão. The different microclimates of the two valleys yield different results, as do the varying soils. Both quintas are planted with a high proportion of Touriga Nacional and Touriga Franca.

Wines being presented by

RUPERT SYMINGTON
MIGUEL FERREIRA

CONTACT

www.chryseia.com
miguel.ferreira@chryseia.com

CONTACT UK

info@fells.co.uk
www.fells.co.uk

PRAZO DE RORIZ 2015

POST SCRIPTUM 2015

CHRYSEIA 2015

QUINTA DE RORIZ VINTAGE PORT 2004

VERTICE

The story of Caves Transmontanas and Vértice began in 1988 with the collaboration between Jack Davies from Schramsberg Vineyards and the Portuguese winemakers João Carvalho Maia and Celso Pereira. They researched areas of Portugal where it would be the most suitable for the creation and development of quality sparkling wines from traditional Portuguese grape varieties. For more than three years they repeated several technical procedures until they found the ideal zone for the production of sparkling wine: Cimo Corgo in the Douro, at an altitude of 550 meters (almost 2000 feet) above sea level. Caves Transmontanas prides itself on the production of premium sparkling wines. The winery had the ambitious goal of producing superior sparkling wine in the Douro region, using the classical champagne method. Located outside the small town of Alijó, Vértice produces around 100,000 bottles of sparkling wines and table wines annually.

Wines being presented by

CELSO PEREIRA

CONTACT

www.dourovertice.pt

celso.pereira@dourovertice.pt

VÉRTICE SPARKLING ROSÉ 2014

VÉRTICE SPARKLING CUVÉE NV

VÉRTICE SPARKLING MILLÉSIME 2011

VÉRTICE SPARKLING GOUVEIO 2008

VÉRTICE SPARKLING PINOT NOIR 2007

VÉRTICE STILL WHITE 2015

VÉRTICE STILL RED 2013

WINE & SOUL

Wine & Soul belongs to Sandra Tavares da Silva and Jorge Serôdio Borges, both winemakers – a couple that in 2001 decided to make a wine together. Pintas is the result, made from a 80-year- old vineyard planted with more than 30 different indigenous grape varieties. In 2003 the first Pintas Vintage Port was also made and in 2004 the first Guru White wine was made from a 44-year-old vineyard with a field blend of Viosinho, Códega, Rabigato and Gouveio. In 2009 by heritage Quinta da Manoella was added to Wine & Soul portfolio; this property was established in 1838 by Vieira de Sousa family, ancestors of Jorge Serôdio Borges; this estate belongs to the same family now for five generations. They say: Our goal is to create wines that express all the character of the traditional vineyards and varieties from Douro Valley. Balanced wines with concentration, complexity and elegance.

Wines being presented by

SANDRA TAVARES DA SILVA

CONTACT

www.wineandsoul.com
sandratavares@wineandsoul.com

CONTACT UK

www.corneyandbarrow.com
christelle.chedeville@corneyandbarrow.com

MANOELLA WHITE 2016

GURU WHITE 2016

MANOELLA RED 2015

PINTAS CHARACTER RED 2015

PINTAS RED 2015

QUINTA DA MANOELLA VINHAS VELHAS 2015

PINTAS VINTAGE PORT 2015

THE NEW DOURO

Taste along the River

Follow us on

 facebook.com/thenewdouro

 @thenewdouro

 @thenewdouro



RIEDEL 
THE WINE GLASS COMPANY

Event partner

GRAPE  VARIETAL SPECIFIC[®]